

# PIPE EXTRUSION LINES



[www.pipeextrusions.com](http://www.pipeextrusions.com)







## About us

We are ISO 9001:2008 certified manufacturer & exporter of standard and customized Single and Twin (cylindrical/conical) Screw and Barrel & High-Speed Heater-Cooler Mixer machine. We are established since 1992 with the state-of-the-art manufacturing facility located at Dhamatvan, Ahmedabad spread in a plot area of 10000 sq. mtrs.

Till date, we have served more than 1500 customers in the World in past 27 years. Our 70% market share in this industry segment has made us Market Leader and this has been possible due to the highest customer satisfaction and confidence put on us.

Our factory is fully equipped with CNC Thread Milling Machine (4-meter-long), CNC Deep Hole boring Machine, Gun Drilling Machine, Gas Nitriding Furnace (4 meters) and other modern machinery.

**Taking the next step forward, we are now equipped to provide a complete solution to your need for plastic pipe processing machinery, as we have ventured into PVC, PE pipe extrusion lines as well for Garden hose and Suction hose pipe. Quality benchmarking with competitive pricing will remain our prime motto backed up with prompt and efficient after-sales service.**

Most advanced manufacturing process technology, precision machinery, stringent quality control standards and passion for new developments with continuous R and D has taken the company to a new horizon.

# Milestones

- 1992**  
Established by three partners as M/s. Shree Krishna Industries with 80 yards of land area located in Narol.
- 1994**  
Formed as Shree Radhe Krishna Engineering Co.
- 1995**  
First manufacturing unit in Vatva.
- 2000**  
Second manufacturing unit in Vatva.
- 2001**  
Purchased Latest Technology CNC Thread Milling Machines for screw manufacturing.
- 2004**  
Installed in house Nitriding Facility to provide a better quality
- 2007**  
Started manufacturing of High Speed Heater Cooler Mixer Machines.
- 2009**  
Formed as Shree Radhekrishna Extrusions Pvt.Ltd.
- 2010**  
Purchased Latest Technology Twin CNC Deep Hole Machines to achieve better quality in the barrel.
- 2012**  
Installed CNC Gun drilling facility.
- 2017**  
Shifted our manufacturing unit to Dhamatvan which is spread in 1,00,000 Sq. Feet.
- 2018**  
Ventured into all kind of Plastic Pipe Extrusion Lines.



## Integrated World Class Facilities

Shree Radhekrishna Extrusions Pvt. Ltd. has emerged as India's largest manufacturer of screws – barrels with state-of-the-art manufacturing set up at Ahmedabad. The factory is set up in the area of 100000 sq ft with machining facility based on CNC & DRO and also in house Nitriding furnace. The same facility also builds a variety of plastic processing machinery and spares to cater to the ever-growing needs of customers.

## High-Quality Team

The company employs 125 devoted manpower including 30 skilled engineers from different fields. R & D department is manned with skilled and experienced engineers. The other business functions are staffed by higher caliber and qualified experts.

## Most advanced operational machine tools and technology

Radhekrishna utilizes the most sophisticated machine tools and operational methods available globally to ensure that the end-product does not only match but exceeds the performance requirements. Screws, Barrels, grooved feed bushes, Die Heads, die components, various kinds of downstreams are manufactured in-house. Sculptor accuracy is applied to plants with sound engineering basics through an autonomous tool room comprised of the CNC Thread Milling Machine, a 4-axis vertical machining centre, a deep hole boring machine, a Vertical Honing machine, a Gas nitriding furnace, and a rigorous quality assurance test.

All functional departments operate through digital network ensuring consistency and reliability as a part of the system. Cater to the ever-growing needs of customers.

## Product Range

- PVC Pipe Extrusion Lines
- PE / PPR Pipe Extrusion Lines
- Garden Hose Pipe Extrusion Lines
- Suction Hose Pipe Extrusion Lines
- High Speed Heater Cooler Mixer Machines
- Twin Screws & Barrels
- Single Screws & Barrels



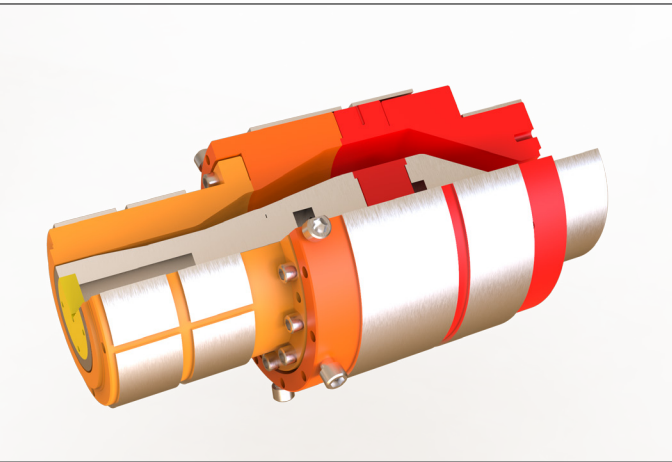


Special Features & Advantages

- The special design of the screw-enhanced material output at a reduced screw speeds.
- Low shear stress on the material-excellent quality of melting.
- The superior quality of the end products.
- At reduced power consumption, higher output.
- High-rated AC synchronization drives .
- Cooling of the internal screw.
- For more gradual cooling, air-cooled barrel.
- Tungsten Carbide Coating for high wear resistance on Screw Edges & HSS Sleeve Fitting in Barrel.
- PLC controls on all models as standard.

Extruder Specification

Model	Unit	RKTP 52-100	RKTP 52-170	RKTP 65-200	RKTP 65-250	RKTP 71-350	RKTP 90-450	RKTP 90-550	RKTP 92-700	RKTP 110-950	RKTP 135-1500
Screw dia.	mm	52	52	65	65	71	90	90	92	110	135
L/D Ratio	-	18 : 1	25:1	18 : 1	22 : 1	28 : 1	22 : 1	25 : 1	28 : 1	28:1	28:1
Main motor	kW	11.25	15	22.5	22.5	30	45	60	75	90	160
Output	Kgs/hr	100-110	150-170	180-200	220-250	300-350	400-450	500-550	650-700	850-950	1300-1500
Pipe Range (Single Die Head)	mm	20-110	20-200	20-200	63-250	110-315	110-400	100-400	160-400	160-400	250-630
Pipe Range (Twin Die Head)	mm	19-50	19-50	19-50	20-110	20-110	20-110	63-200	63-200	90-200	110-250



Special Features & Advantages

- High volume design with low pressure guarantees a wider variety of thicknesses
- Uniform melt distribution across the entire circumference of the pipe
- Twin die head for higher output in smaller diameter
- Optimizing back pressure enables compression equilibrium and temperature control of the melt.
- The tool can be rapidly changed.
- Modular design
- cover wide pipe diameter range
- Optimum flow properties throughout the whole flow channel
- Enables high production ratio

Single Pipe Die Head Specification

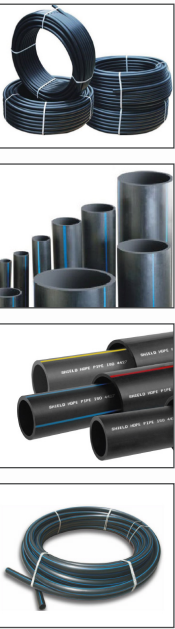
Model	Unit	RKD-75/250	RKD-110/250	RKD-200/400	RKD-250/600	RKD-315/800	RKD-400/800	RKD-450/1000	RKD-630/1000
Throughput	Kgs/hr	250	250	400	600	800	800	100	1200
Pipe Range	mm	16-75	20-110	50-200	63-250	110-315	110-400	160-450	225-630

Dual Pipe Die Head Specification

Model	Unit	RKDT -50/100	RKDT - 110/500	RKDT - 200/800
Throughput	Kgs/hr	250	250	400
Pipe Range	mm	16-75	20-110	50-200



# PE & PPR Pipe Extrusion Lines



### Special Features & Advantages

- 37:1 LD Extruder.
- Special Design of Grooved Feed.
- The 37:1 L / D ratio ensures great homogeneity of the melt
- Minimal waste on start-up.
- 45mm Extruder, 330 Kgs/hr output
- Versatile screw designed for PE & PP Random Copolymer

### Extruder Specification

Model	Unit	RKSH 45-140	RKSH 45-190	RKSH 45-240	RKSH 45-330	RKSH 60-400	RKSH 60-550	RKSH 75-700	RKSH 75-850
Screw dia.	mm	45	45	45	45	60	60	75	75
L/D Ratio	-	37:1	37:1	37:1	37:1	37:1	37:1	37:1	37:1
Main motor	kW	45	55	75	90	110	132	200	250
Output	Kgs/hr	140-160	180-190	220-240	300-330	380-400	500-550	650-700	800-850

## Die Heads | Polyolefin Processing (PE/PPR) Model

### Single Pipe Die Head Specification

Model	Unit	RKDH – 50	RKDH – 200	RKDH – 250	RKDH-450	RKDH – 630
Throughput	Kgs/hr	200	500	800	1000	1200
Pipe Range	mm	12-50	20-200	63-250	90-450	225-630
Internal Pipe Cooling	N.A	N.A	IPC	IPC	IPC	

### Dual Pipe Die Head Specification

Model	Unit	RKTDH – 50	RKTDH – 200
Throughput	Kgs/hr	400	1000
No. of Layers		1	1
Pipe Range	mm	12-50	20-200

### Co-Extrusion Pipe Die Head Specification

Model	Unit	RKCH-50	RKCH-110 (LV)	RKCH-110 (HV)	RKTH-110 (LV)	RKTH-110 (HV)	RKTH-250	RKTH-450
Throughput	Kgs/hr	200	350	450	240	400	550	900
Pipe Range	mm	12-50	20-110	20-110	20-110	20-110	20-250	90-450
Outer Thickness Range (up to)	%	90	90	85	10:80:10	25:50:25	25:50:25	33:34:33
No. of Layers		2	2	2	3	3	3	3

## Single Screw Jockey & Co-Extruder



### Applications

- PP Tubes for
- HDPE / PP Pipes
- Garden Hose Pipes
- Soft PVC Tubing
- Suction Hose Pipes
- Cable Coating

### Single Screw Jockey & Co-Extruder Specifications

Model	Unit	RKJE – 18	RKJE – 25	RKCO – 40	RKCO – 50	RKCO – 65	RKCO – 75
Screw dia.	mm	18	25	40	50	65	75
L/D Ratio	-	20:1	24:1	26:1	26:1	26:1	26:1
Main motor	kW	0.75	3.75	7.5	15	30	37.5
Output	Kgs/hr	1.5-2	5-6	18-20	36-40	90-100	120-130



# Garden Hose Pipe Extrusion Lines



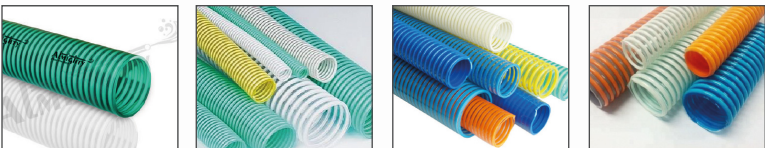
## Radhekrishna Make Single Screw Pipe Extrusion Line for Garden Pipe

- Screw Dia. – 45 mm to 90 mm
- Output Capacity – 60 kgs/hr to 120 kgs/hr
- Screw L/D Ratio – 28:1
- Application – Garden Hose

### Garden Hose Pipe Extrusion Lines Specification

Model	Unit	RKGP – 65MM	RKGP – 75MM	RKGP – 90MM
Screw dia.	mm	65	75	90
L/D Ratio	-	28:1	28:1	28:1
Main motor	kW	12	15	19
Output	Kgs/hr	50 – 60	70 – 80	100 - 110

# Suction Hose Pipe Extrusion Lines



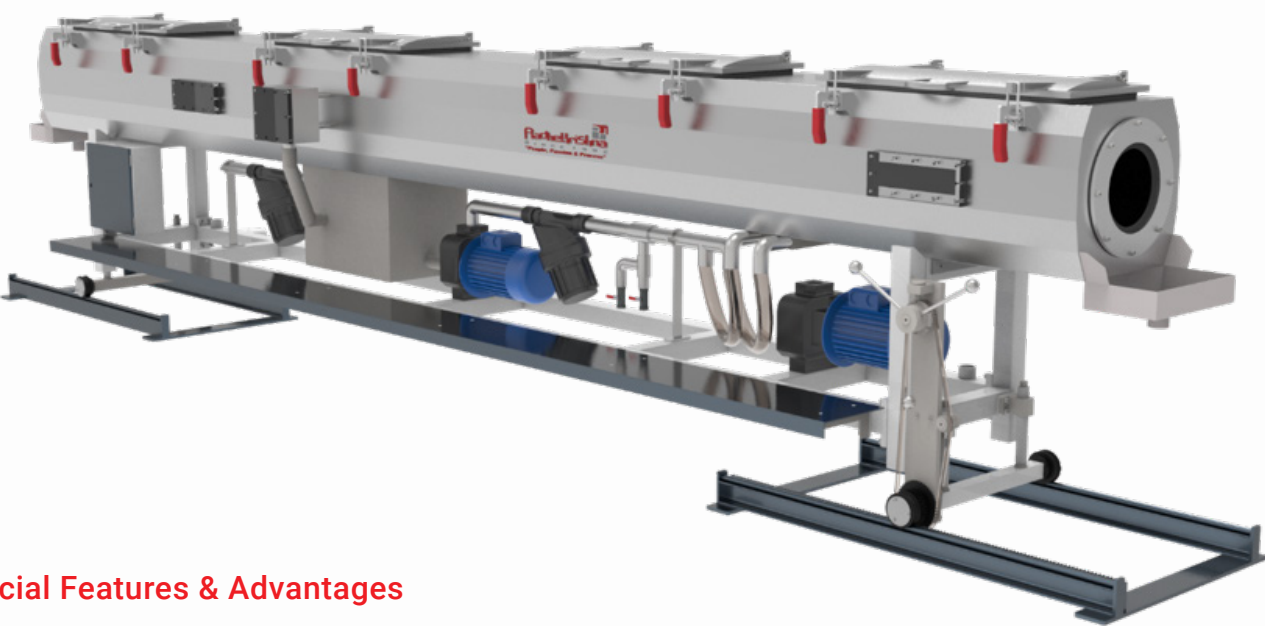
## Radhekrishna Make Single Screw Pipe Extrusion Line for Suction Hose Pipe

- Screw Dia. – 50 mm to 75 mm for Soft PVC  
45 mm to 70 mm for Rigid PVC
- Output Capacity – 25 kgs/hr to 120 kgs/hr
- Screw L/D Ratio – 25:1
- Pipe Size – ¾” to 12”
- Application – Suction Hose Pipe

### Suction Hose Pipe Extrusion Lines Specification

Model	Unit	RKSP – 45-50	RKSP – 50-65	RKSP – 65-70	RKSP – 70-75
Screw dia. (Rigid)	mm	45	50	65	70
Screw dia. (Soft)	mm	50	65	70	75
L/D Ratio	-	21:1	25:1	25:1	25:1
Main motor (Rigid)	kW	8	12	15	19
Main motor (Soft)	kW	6	12	15	15
Output	Kgs/hr	25 – 45	25 – 70	40 – 90	60 – 120





Special Features & Advantages

- Stable and efficient cooling.
- Quick start up as seals maintain vacuum at out of shape pipe.
- Simple operations.
- Fully welded tank shell construction of stainless steel.
- Connection to line control.
- Proportional level and temperature control, resulting in a more stable water level.
- Intensive cooling to guarantee a high level of production rate.
- Manual slide rail arrangement for axial and traverse movement of the tank.
- Lids casted in aluminum.
- Better filters for the screen–larger area of filtration–auto cleaning.
- Separate circuits for vacuum and water spray.

Vacuum Tank Specification

Model	Unit	RKVT – 110	RKVT – 200	RKVT – 250	RKVT – 315	RKVT – 450	RKVT - 630
Pipe Range	mm	20-110	20-200	50-250	50-315	75-450	110-630
Cooling Length mtr		4/6/8/9	4/6/8	6/8	6/8	6/8	8
No. of Chamber -		1	1	2	2	2	2

Cooling Tank Specification

Model	Unit	RKCT – 110	RKCT – 200	RKCT – 250	RKCT – 315	RKCT – 450	RKCT - 630
Pipe Range	mm	20-110	20-200	50-250	50-315	75-450	110-630
Cooling Length mtr		4/6/8	4/6/8	6/8	6/8	6/8	8
No. of Chamber -		1	1	1	1	1	1



Special Features & Advantages

- Integrated synchronization of the precise line.
- Multi belt – 2/4/6 belts – ovality free pipes.
- Minimum velocity range significantly decreased.
- Different line speeds can be changed by changing the sprockets (on request)
- Higher pulling force. Bigger pneumatic cylinders with a high clamping force.
- Long contact length.
- Quick diameter change.
- Very low chain wear.
- Extra-wide pads made of imported rubber.
- Slip control.
- Servo Design (can be provided on request)

Extruder Specification

Model	Unit	RKHO- 110	RKHO- 200	RKHO- 250	RKHO- 250/4	RKHO- 315/4	RKHO- 450/4	RKHO- 630/6	RKHO- 630/8
Pipe Range	mm	16-110	20–200	50-250	63-250	63-315	75-450	110-630	250-630
No. of Tracks	Nos.	2	2	2	4	4	4	6	8
Max. Line Speed	mtrs./min	15	15	15	7	10	7	6	4.5
Contact Length	mm	800	1200	1600	1200	1200	1600	1450	1450
Drive Option		ServoElec./ Standard	ServoElec./ Standard	ServoElec./ Standard	ServoElec./ Standard	ServoElec./ Standard	Servo Elec.	Servo Elec.	Servo Elec.



# Cutting Units



### Special Features & Advantages

- Suitable for PE and PVC pipe high-speed lines.
- Low noise due to acrylic cover (on request).
- Multiple lengths of cutting in a single line.
- During production, parameters for cutting can be set.
- Clean and dust-free cuts.
- Unmatched cutter quality.

### Tube Cutting Unit Model Specification

Model	Unit	RKCU – 110	RKCU – 200	RKCU – 250	RKCU – 315	RKCU – 110/2	RKCU – 200 / 2
Pipe Range	mm	20-110	20-200	50-250	90-315	20-110	20-200
Cutting Speed(Max.)	mtrs./min	20	12	10	6	20	12
Clamping From-		Top	Top	Top	Side/Top	Top	Top

### Chipless Cutter Specification

Model	Unit	RKSC – 110	RKSC – 200	RKSC – 450	RKSC – 630
Pipe Range	mm	16-110	63-200	110-450	200-630
Cutting Speed(Max.)	mtrs./min	25	12	5	5
Clamping From-		20	28	60	80

# Tilting Units



### Special Features & Advantages

- Rigid heavy-duty MS structure
- Rubber pad made from imported rubber
- Pneumatically operated
- The operation of two limit switches – one for pipe cutter feedback and others for tilting the pipe

### Tilting Unit

Model	Unit	RKTU – 110	RKTU – 200	RKTU – 250	RKRS – 400	RKRS – 630
Pipe Range	mm	16-110	20-200	50-250	90-400	110-630
Bed Type		Flat Tray	Roller – Tilting	Roller – Tilting	Roller – Tilting	Roller – Tilting



## Twin Parallel Screws & Barrels

Radhekrishna Extrusions produces Twin Parallel screw and barrels. Screw Diameter ranges from 35 mm to 150 mm. We adhere to all manufacturing standards to ensure Worldclass quality.

- PVC Pipe Manufacturer (RPVC, CPVC)
- PVC Profile Manufacturer (RPVC, CPVC)



## Twin Conical Screws & Barrels

Radhekrishna Extrusions produces Twin Conical screw and barrels. Screw Diameter ranges from 35 mm to 150 mm. We adhere to all manufacturing standards to ensure Worldclass quality.

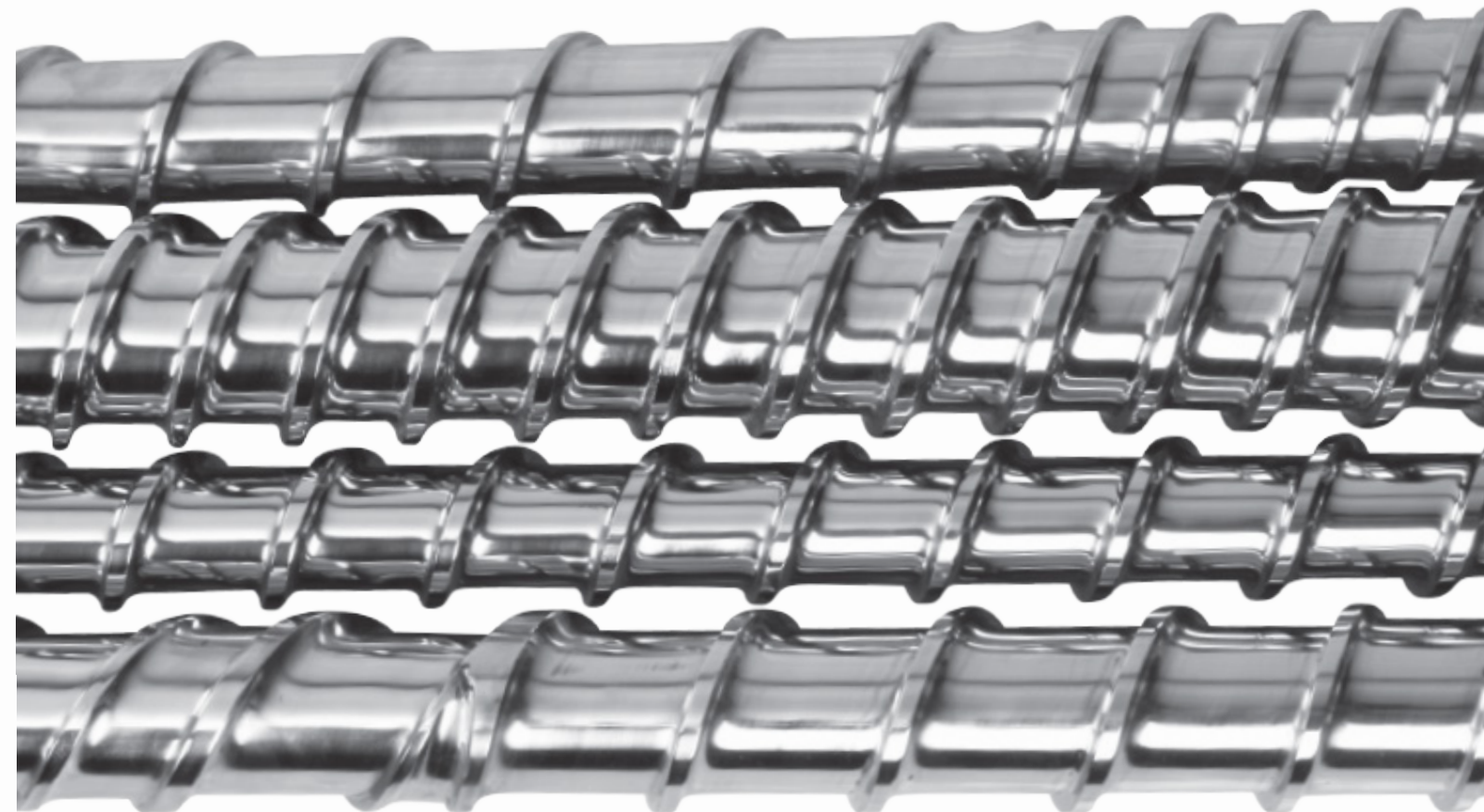
- PVC Pipe Manufacturer (RPVC, CPVC)
- PVC Profile Manufacturer (RPVC, CPVC)



## Single Screws & Barrels

Radhekrishna produces single screw and barrels. Screw diameter ranges from 20 mm to 230 mm and up to 8000 mm in length.

- **Pipe Plant**
  - PVC Pipe Manufacturer (U PVC, R PVC, CPVC)
  - HDPE Pipe Manufacturer
  - PVC Braided Pipe Plant
  - PVC Suction Hose Pipe
  - PVC Soft Tubing Plant
- **Sheet Plant**
  - Air Bubble Sheet Plant
  - PP Sheet Plant
  - HIPS Sheet Plant
  - PVC Sheet Plant
  - Thermo Forming Sheet Plant
- **Film Plant**
  - Tape Plant
  - Lamination Film Plant
  - Blown Film Plant
- Multi-Layer Film Plant
- PVC Film Plant
- Cable Manufacturer (Any Type of Materials)
- Compounding Plant
- Injection Moulding Machinery
- Blow Moulding Machinery
- Any type of Plastic Pallet Manufacturing





# High Speed Heater Cooler Mixer Machines



Radhekrishna extrusions manufactures high speed mixers for rigid PVC and soft PVC compounding applications. These are designed considering high/low filled compound application as per customer’s requirement.

### Applications:

- RPVC / SPVC Compound Applications
- Master Batch Applications
- Antifab Master Batch Applications
- Filler Coating Applications

### Special Features & Advantages

- Wide range of models starting from 10 to 3000 ltr.
- Suitable for low/high filled compound application.
- Versatility to mix all chemicals/additives with base resin.
- Power efficient.
- Best safety features for operator’s safety.
- Proper homogeneous mixing of material.
- Pneuma seal technology for preventing powder infiltration inside bearing.
- Special coating on tool enhances life of the tool.
- Attractive aesthetic look.
- Dynamic balancing of drive – driven pulley and blades.

### Mixer Models for Rigid PVC Compound

Model	Batch Capacity(kg)	Hourly production capacity per hour (4-5 batches in an hour)	Heater mixer motor capacity	Cooler mixer motor capacity
RKHSM-10/RKCM-40	3	12-15	2.2/3.7 kW	0.75 kW
RKHSM-10V/RKCM-40	3	12-15	3.7 kW	0.75 kW
RKHSM-130r/RKCM-400	35-40	160-200	12/15 kW	3.7 kW
RKHSM-200R/RKCM-400	65-70	280-350	26/31 kW	3.7 kW
RKHSM-250R/RKCM-600	85-90	360-450	32/38 kW	5.5 kW
RKHSM-350R/RKCM-1000	115-120	480-600	38/56 kW	7.5 kW
RKHSM-500/RKCM-1500	185-200	800 to 1000	110 kW	11 kW
RKHSM-750/RKCM-2500	285-300	1200-1500	132 kW	26 kW
RKHSM-1000/RKCM-3000	400	1600-2000	190 kW	37 kW

### Mixer Models for Soft PVC Compound

Model	Batch Capacity(kg)	Hourly production capacity per hour (4-5 batches in an hour)	Heater mixer motor capacity	Cooler mixer motor capacity
RKHSM-10/RKCM-40	3	12-15	2.2/3.7 kW	0.75 kW
RKHSM-10 V/RKCM-40	3	12-15	3.7 kW	0.75 kW
RKHSM-130 S/RKCM-400	35-40	160-200	15/18 kW	3.7 kW
RKHSM-200 S/RKCM-400	65-70	280-350	32/38 kW	3.7 kW
RKHSM-250 S/ RKCM-600	85-90	360-450	38/46 kW	5.5 kW
RKHSM-350 S/RKCM-1000	115-120	480-600	46/67 kW	7.5 kW
RKHSM-500/RKCM-1500	185-200	800 to 1000	110 kW	11 kW
RKHSM-750/RKCM-2500	285-300	1200-1500	132 kW	26 kW
RKHSM-1000/RKCM-3000	400	1600-2000	190 kW	37 kW

# OUR FOOT PRINTS



Abu Dhabi



Ajman



Angola



Bangladesh



Botswana



Doha



Egypt



Indonesia



Jordan



Kenya



Kuwait



Malaysia



Nepal



New Guinea



Nigeria



Oman



Papua



Qatar



Saudi Arabia



Sri Lanka



Syria



Tanzania



Thailand



U.A.E



Yemen



**RADHE  
KRISHNA**  
EXTRUSIONS

SINCE 1992

AN ISO 9001:2008 CERTIFIED COMPANY

## SHREE RADHEKRISHNA EXTRUSIONS PVT. LTD.

**CORPORATE  
OFFICE**

4th Floor, "Entice", Opp. Jayantila BRTS Stand, Ambli-Bopal Road,  
Ahmedabad-380058, Gujarat India. +91 99242 04501 | 63599 48705

**FACTORY &  
REGD. OFFICE**

Plot No. 9, Sardar Patel Estate, Dhamatvan, Ta. Daskroi, District  
Ahmedabad-382435, Gujarat India. +91 98247 04502

mail@radhekrishnaexports.com